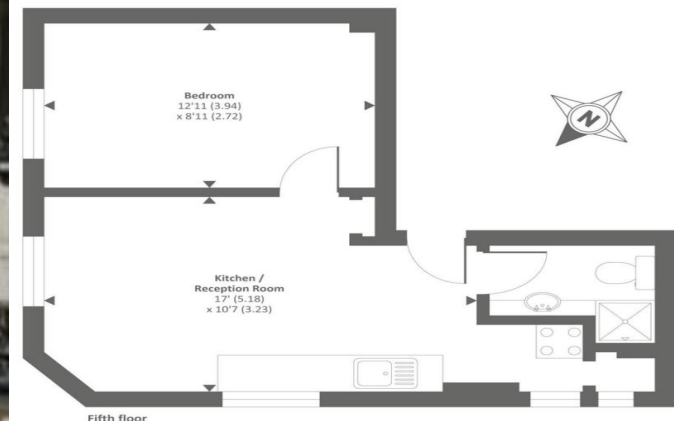


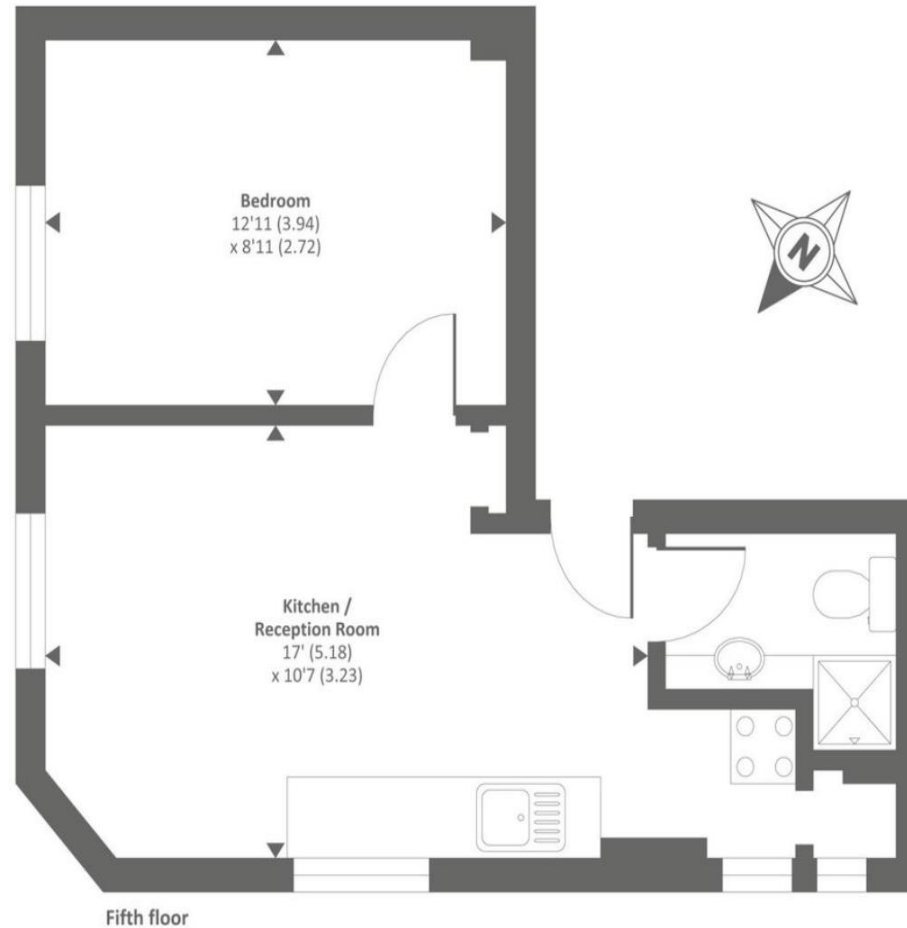
Westbourne Terrace, London, W2
£375 Weekly | 1 Bedrooms



Westbourne Terrace, London, W2 £375 | 1 Bedrooms

A bright and well presented flat situated on the fifth floor in this period conversion with lift. Comprising one double bedroom, open plan kitchen and living area, one bathroom and wood floors throughout.

Westbourne Terrace is an attractive tree lined street of beautiful white stucco properties. Ideally located for Paddington, Queensway and Bayswater Station and within a short walk to Hyde Park.



Please note tenant fees may apply

Misrepresentation Act 1967. These particulars and the descriptions and measurements herein do not constitute representation and whilst every effort has been made to ensure accuracy this cannot be guaranteed.

Energy Efficiency Rating		Environmental Impact (CO ₂) Rating	
Current	Potential	Current	Potential
Very energy efficient - lower running costs		Very environmentally friendly - lower CO ₂ emissions	
(92-100) A		(02-10) A	
(81-91) B		(11-41) B	
(69-80) C		(29-40) C	81
(55-68) D		(35-40) D	57
(39-54) E	49	(39-54) E	
(21-38) F		(21-38) F	
(1-20) G		(1-20) G	
Not energy efficient - higher running costs		Not environmentally friendly - higher CO ₂ emissions	
England, Scotland & Wales	EU Directive 2002/91/EC	England, Scotland & Wales	EU Directive 2002/91/EC

The energy efficiency rating is a measure of the overall efficiency of a home. The higher the rating the more energy efficient the home is and the lower the fuel bills will be.

The environmental impact rating is a measure of a home's impact on the environment in terms of carbon dioxide (CO₂) emissions. The higher the rating the less impact it has on the environment.