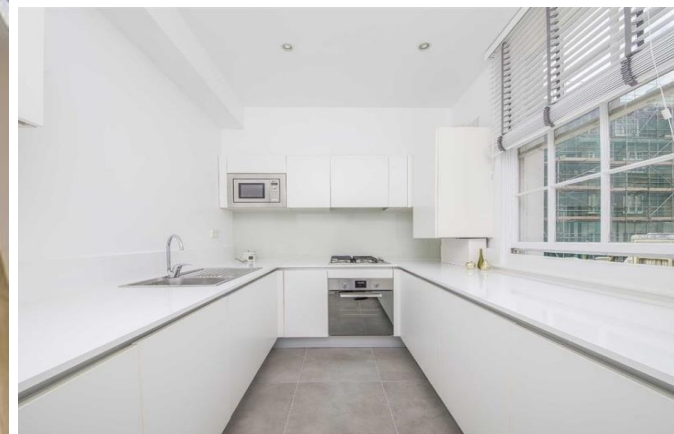
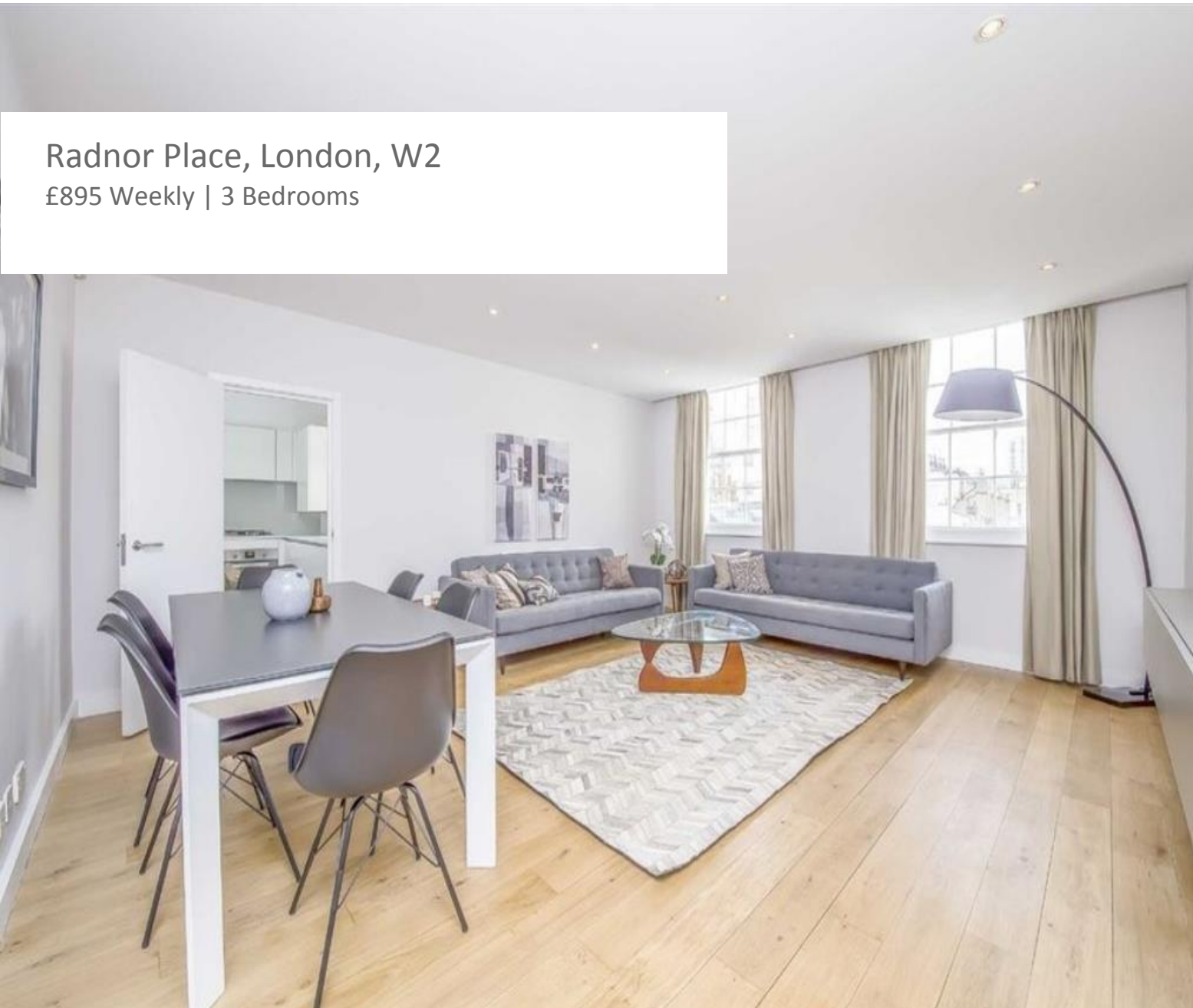


Radnor Place, London, W2
£895 Weekly | 3 Bedrooms

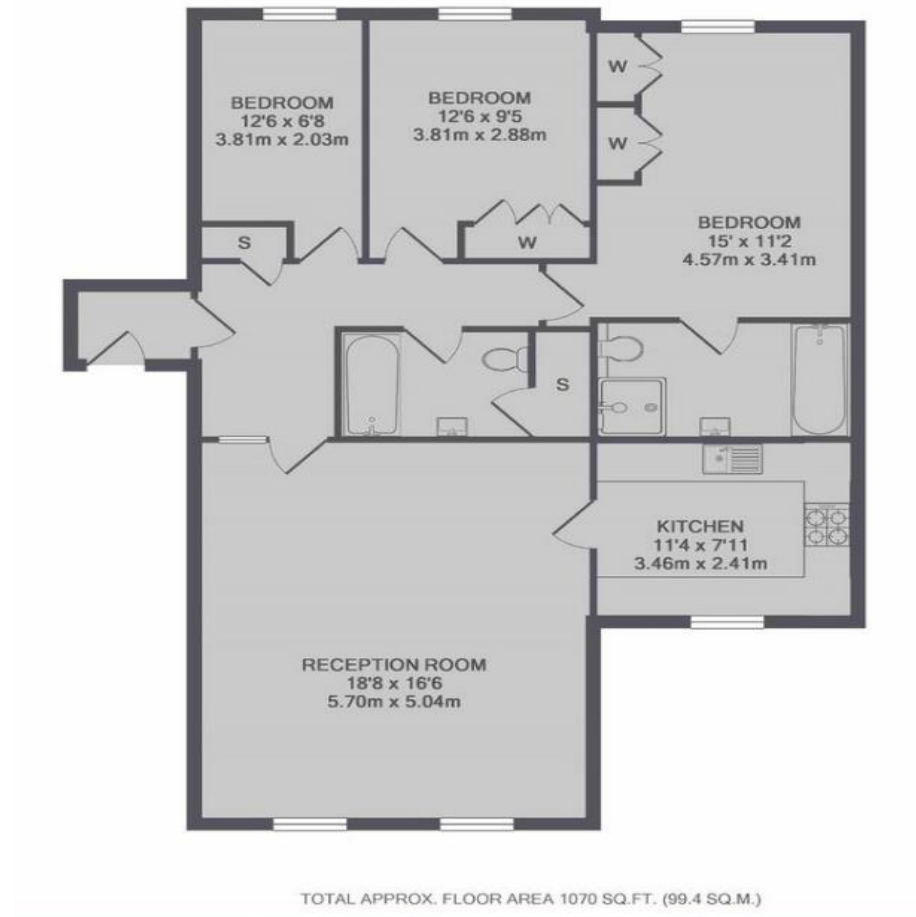


Radnor Place, London, W2

£895 | 3 Bedrooms

A spacious second floor lateral apartment in a period building near Hyde Park. With wooden floors and lift access, this modern and recently refurbished property has two bathrooms, large windows and high ceilings.

Near to the restaurants and cafés of Connaught Village, the closest tubes are Lancaster Gate and Paddington and The Heathrow Express is only a short walk away.



Please note tenant fees may apply

Misrepresentation Act 1967. These particulars and the descriptions and measurements herein do not constitute representation and whilst every effort has been made to ensure accuracy this cannot be guaranteed.

